

Quick Guide

G.R.A.S. RA0311 KEMAR Retrofit Kit for Anthropometric Pinna

Description

The G.R.A.S. RA0311 KEMAR Retrofit Kit for Anthropometric Pinna contains the items needed for retrofitting the anthropometric pinna on a KEMAR previously fitted with standard pinna. The anthropometric pinna must be ordered separately.

It also contains an Exterior Ear Canal and a Union Nut needed for calibration.

Delivered Items

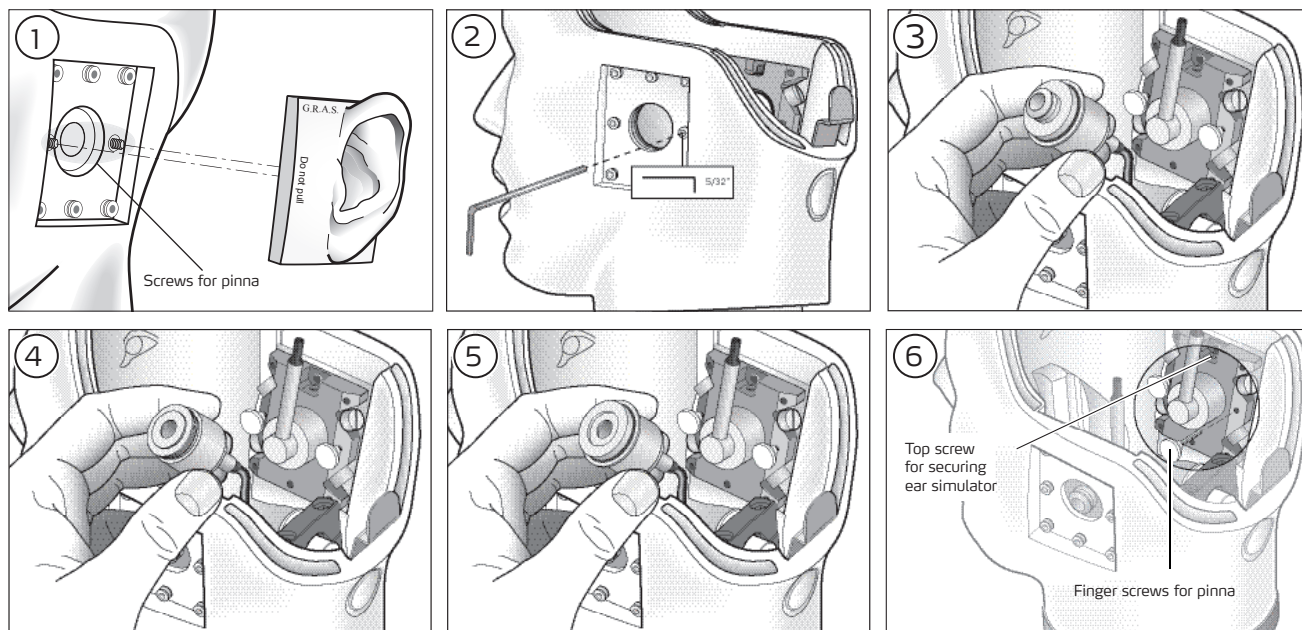
The following items are part of the delivery:

Ear Simulator Holder for Anthropometric Pinna	GR1874
Allen key, 3 mm	YY0028
Exterior Ear Canal	GR0408
Union Nut	GR0409

G.R.A.S. RA0311 KEMAR Retrofit Kit for Anthropometric Pinna

Retrofitting KEMAR with the Anthropometric Pinna

A KEMAR head that has been fitted with a standard pinna has 8 studs for mounting the pinna. However, the anthropometric pinna uses only six of these studs. The two studs in the middle horizontal row must be removed to make room for two finger screws that hold the pinna from the inside ①.



Mounting the Anthropometric Pinna

1. Using the 3 mm Allen key, remove the two Allen stud screws ②.
2. Pull out the ear simulator ③.
3. Remove the Ear Canals Extension by unscrewing it counterclockwise ④.
4. Mount the Ear Simulator Holder onto the Ear Simulator by turning it clockwise ⑤.
5. Mount the Ear Simulator in the Ear Holder Plate by pushing it until secured by the snap-locking mechanism. Tighten the top screw to prevent the ear simulator from popping out during the next steps ⑥.
6. Mount the anthropometric pinna by pushing it over the 6 studs ①.
7. Mount the two finger screws and tighten them, using only finger force. While tightening the finger screws, press the pinna against KEMAR's head ⑥.